

NEW BERN II



*Renderings are for illustrative purposes only
and are subject to change without notice.*

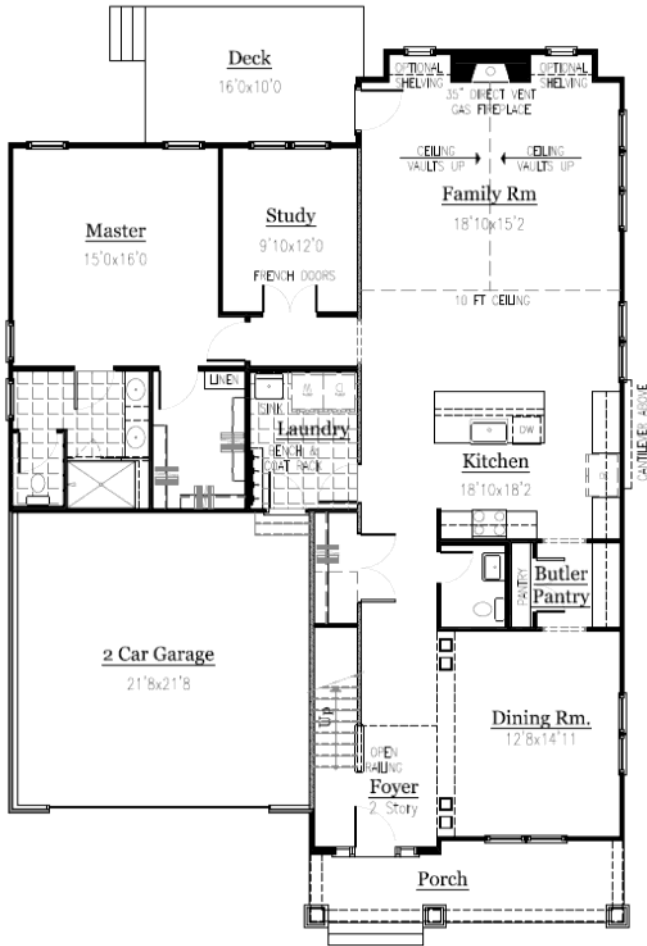
1st Floor	1,900
2nd Floor	<u>677</u>
Total	2,577
Optional Finished Room	<u>400</u>
Grand Total	2,977

The New Bern is an amazingly flexible home with lots of different configurations. This beautiful craftsman style house has both front and side loading garage options. The New Bern II has features a first floor master suite with two additional bedrooms, one full bath, and walk-in storage on the second level. The floorplan has an open concept with the kitchen flowing seamlessly into the casual dining area and spacious family room which features a soaring vaulted ceiling. With so many ways to configure the space this is a great home for families and empty nesters alike!

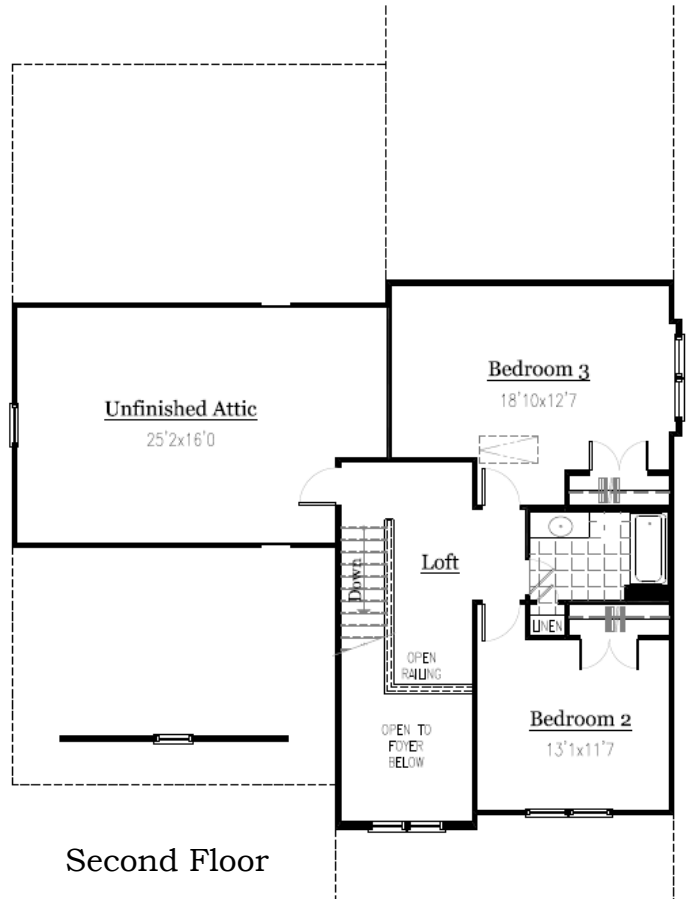


Youngblood

P·R·O·P·E·R·T·I·E·S



First Floor



Second Floor

