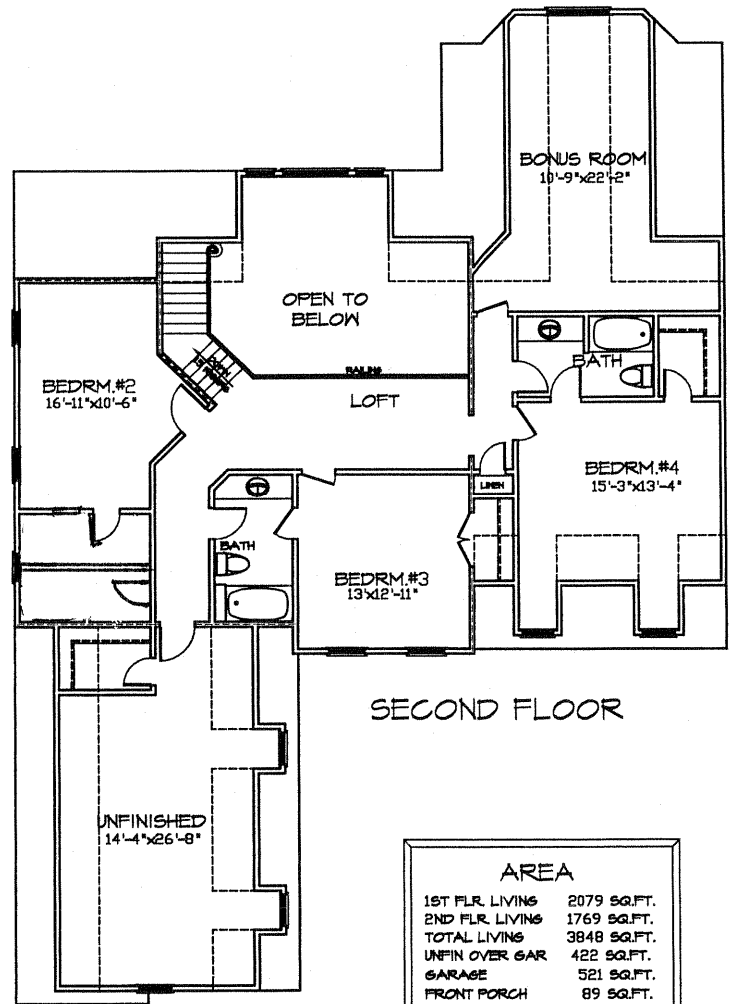
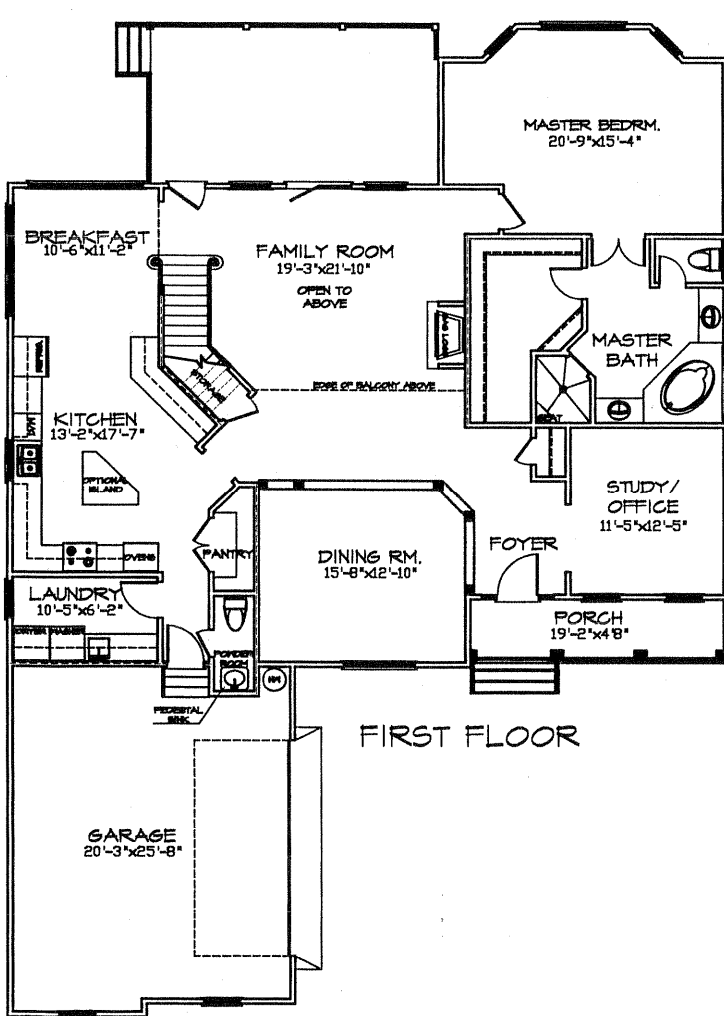


# "THE PEMBERTON"



AREA	
1ST FLR. LIVING	2079 SQ.FT.
2ND FLR. LIVING	1769 SQ.FT.
TOTAL LIVING	3848 SQ.FT.
UNFIN OVER GAR	422 SQ.FT.
GARAGE	521 SQ.FT.
FRONT PORCH	89 SQ.FT.
SCREEN PORCH	264 SQ.FT.

YOUNGBLOOD PROPERTIES, LLC

804-746-5465

Renderings and floor plans are the artist's conception and are for illustrative purposes only. This rendering may include optional features which may be included at an additional cost to purchaser. Actual building plans are often modified to meet building codes, facilitate mechanical installations, and to incorporate design improvements. All dimensions in these drawings are approximate and may vary from actual specifications. The builder reserves the right to initiate changes without prior notice. For more information, contact the site agent.