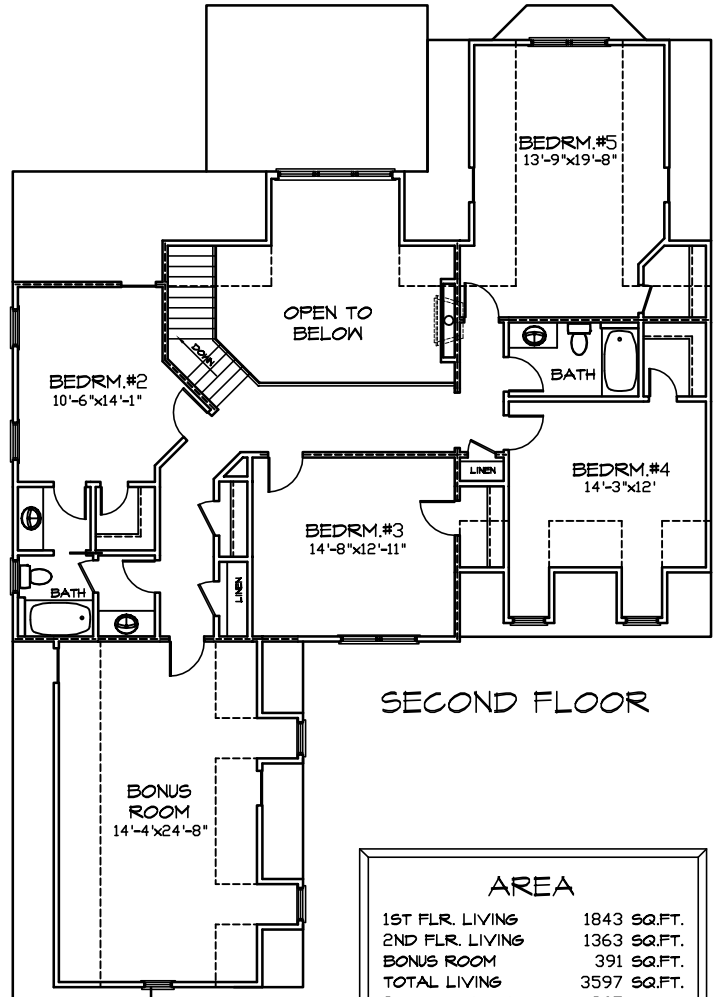
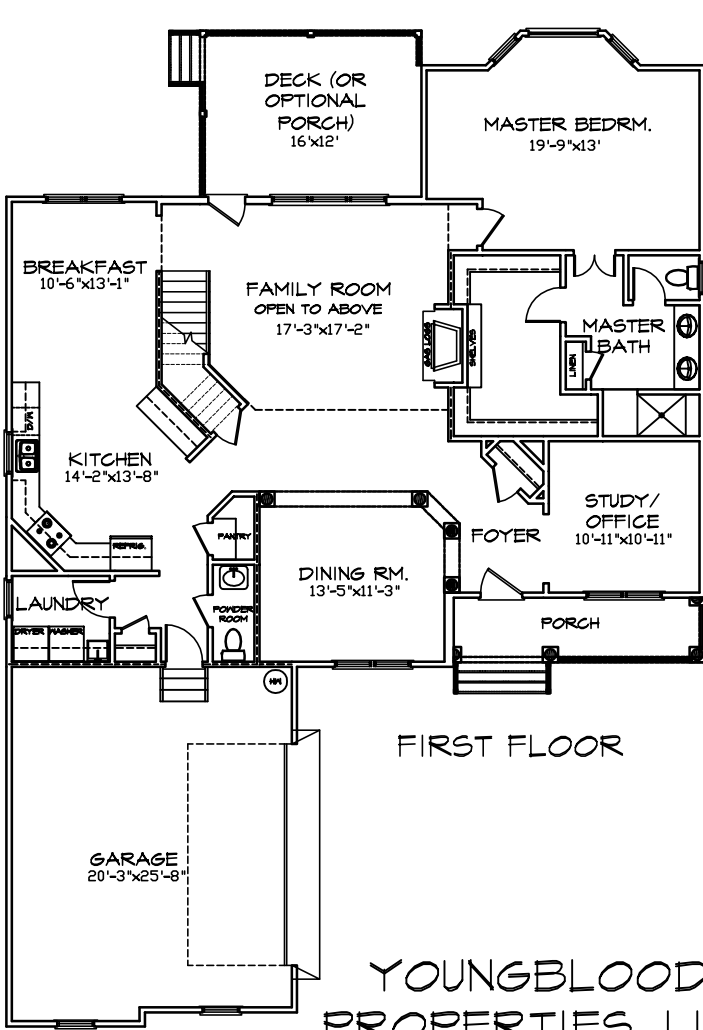


# "THE PEMBERTON II"



YOUNGBLOOD  
 PROPERTIES, LLC  
 804-746-5465

AREA	
1ST FLR. LIVING	1843 SQ.FT.
2ND FLR. LIVING	1363 SQ.FT.
BONUS ROOM	391 SQ.FT.
TOTAL LIVING	3597 SQ.FT.
2-STORY AREAS	265 SQ.FT.
GARAGE	535 SQ.FT.
FRONT PORCH	85 SQ.FT.
DECK/BACK PORCH	192 SQ.FT.

Renderings and floor plans are the artist's conception and are for illustrative purposes only. This rendering may include optional features which may be included at an additional cost to purchaser. Actual building plans are often modified to meet building codes, facilitate mechanical installations, and to incorporate design improvements. All dimensions in these drawings are approximate and may vary from actual specifications. The builder reserves the right to initiate changes without prior notice. For more information, contact the site agent.