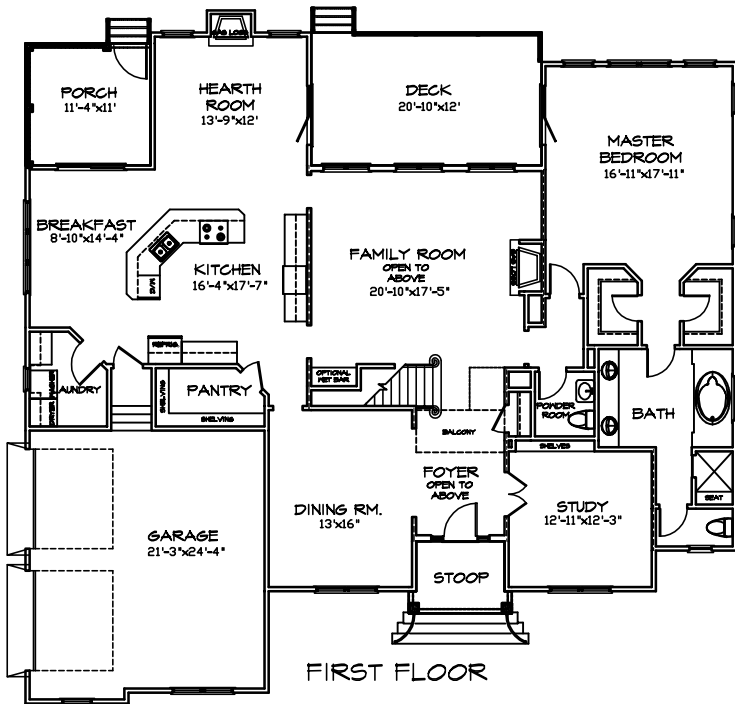
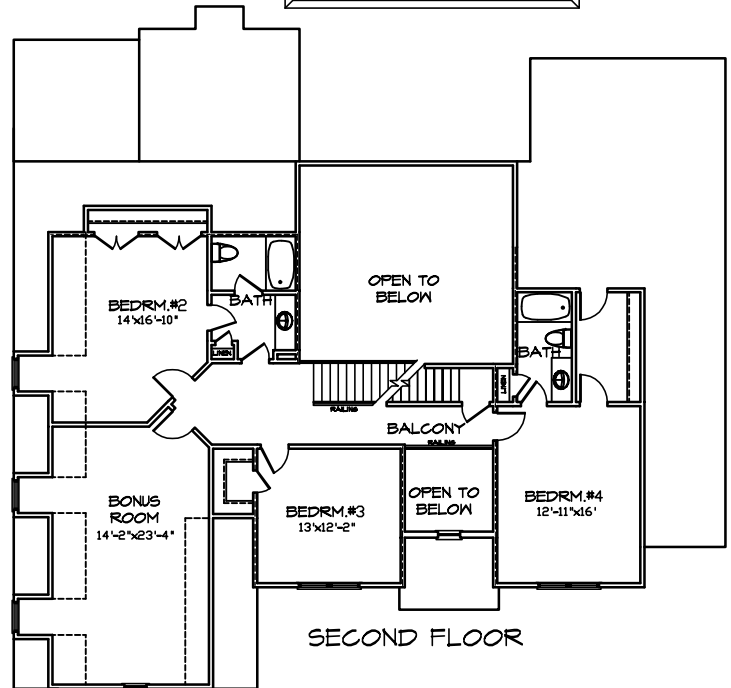


"THE COURTNEY II"



AREA	
1ST FLR. LIVING	2597 SQ.FT.
2ND FLR. LIVING	1458 SQ.FT.
TOTAL LIVING	4055 SQ.FT.
3RD FLR. UNFIN.	735 SQ.FT.
2-STORY AREAS	418 SQ.FT.
GARAGE	545 SQ.FT.
FRONT PORCH	55 SQ.FT.
BACK PORCH	125 SQ.FT.
DECK	250 SQ.FT.



YOUNGBLOOD PROPERTIES, LLC
804-746-5465

Renderings and floor plans are the artist's conception and are for illustrative purposes only. This rendering may include optional features which may be included at an additional cost to purchaser. Actual building plans are often modified to meet building codes, facilitate mechanical installations, and to incorporate design improvements. All dimensions in these drawings are approximate and may vary from actual specifications. The builder reserves the right to initiate changes without prior notice. For more information, contact the site agent.